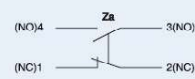


特征 Features

- 坚硬金属外壳，极大摇臂角度 ±95°
- 不锈钢滚轮，冲头及弹簧
- 可选配 M18x1.5 索头
- Strong metal outer shell, swing arm max ±95°
- Stainless steel idler wheel, punch and spring
- Selective M18x1.5 cable gland

接触形式 Contact form



特性 Characteristics

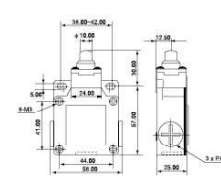
双断开机械功用	Double Break Mechanism	INO+INC Force Break snap action 强迫断开快速机芯
额定电压 / 电流	Rated Voltage / Current	10(4)A, 125, 250VAC / 6(2)A, 380VAC For inductance Load, Cos φ=0.4
接触电阻	Contact Resistance	25mΩ max. (initial value)
绝缘电阻	Insulation Resistance	100mΩ min. (at 500VDC)
电介强度	Dielectric Strength	1000VAC, 50/60 Hz for 1 minute between terminals of the same polarity 1500VAC, 50/60 Hz for 1 minute between current-carrying and non-current-carrying metal parts 1500VAC, 50/60 Hz for 1 minute between each terminal and ground
操作速度	Operating Speed	5mm/s to 0.5m/s
防水防尘能力	Degree of Protection	IP40
上升温度	Ambient Temperature Rised	Max 30°C over ambient temperature at rated voltage/current
合乎标准	Conformd Standards	Cenclcnc EN 50041, EN 50047, IEC 337 1, VDE 0660
操作温度	Operating Temperature	-5°C ~+65°C (with no icing)
保存温度	Storage Temperature	-5°C ~+65°C (with no icing)
湿度	Ambient Operating Humidity	95% RH Max.
冲击系数	Shock Resistance	Mechanical durable: 1000m/s ² min. Malfunction: 300m/s ² min.
振动频率	Vibration Frequency	Malfunction: 10 to 55Hz, 1.5mm double amplitude
端子螺丝扭力	Terminal Screw Torsional Force	6-8 kgf-cm
其他螺丝扭力	Other Screw Torsional Force	Cover 12-14 kgf-cm/Head 8-9 kgf-cm/Mounting 50-60 kgf-cm
裸铜线尺寸	Bare Wire Diameter	φ 2 Max
电缆尺寸	Cable Diameter	φ 12 Max/IP 65 if use cable φ 8-9)

动作特性 Operating Characteristics

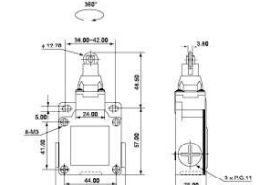
动作特性	Operating Characteristics	型号 Model	TSA-001	TSA-003	TSA-012	TSA-021	TSA-041	TSA-031	TSA-051	TSA-061	TSA-071	TSA-081
操作力	Operating force	OF 最大 (H _{Max})	7.84N	7.84N	7.84N	3.92N	3.92N	3.92N	3.92N	1.47N	1.47N	1.47N
回弹力	Release force	RF 最小 (H _{Min})	3.92N	3.92N	3.92N	0.98N	0.98N	0.98N	0.98N	0.49N	0.49N	0.49N
前预行程	Prc travel	PT 最大 (H _{Max})	1.8mm	1.8mm	1.8mm	20°	20°	20°	20°	30mm	30mm	30mm
触发位置	Tripping position	TP ± 10%	2.0mm	2.0mm	2.0mm	22.5°	22.5°	22.5°	22.5°	22.5°	22.5°	22.5°
行程移动分辨率	Movement differential	MD 最大 (H _{Max})	1.2mm	1.2mm	1.2mm	10°	10°	10°	10°	14°	14°	14°
触后行程	Over travel	OT 最小 (H _{Min})	4.0mm	4.0mm	4.0mm	75°	75°	75°	75°	20mm	20mm	20mm
累积总行程	Total travel	TT 最小 (H _{Min})	5.8mm	5.8mm	5.8mm	95°	95°	95°	95°	50mm	50mm	50mm
摇臂转换分角度	Rotary in clcking					22.5°	22.5°	22.5°	22.5°			

外观和尺寸 Appearance and Dimension

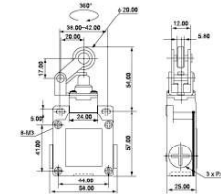
TSA-001



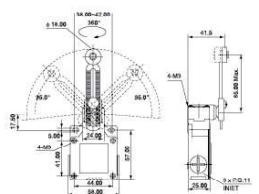
TSA-003



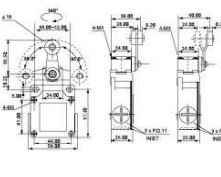
TSA-012



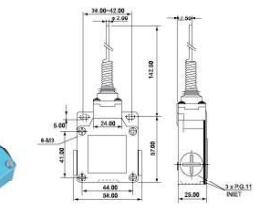
TSA-031



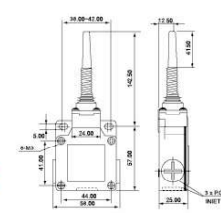
TSA-021



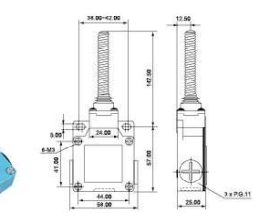
TSA-061



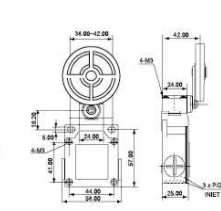
TSA 071



TSA 081



TSA-041



TSA-051

