

T5 钮子开关 Toggle Switch

特征 Features

- ◎ 电流分10A及15A
- ◎ 切换方式有固定式及复位式(单投及双投皆可复归)
- ◎ 接线端子有螺丝端子及焊接端子(亦可用快速端子)
- ◎ 防水套可防水、防油,适用于全系列
- ◎ 固定孔径: $\phi 12\text{mm}$
- ◎ The current has 10A and 15A
- ◎ Movement way has fixed type and auto-return type (both single-throw and double-throw can return)
- ◎ The terminal block has screw terminal and solder terminal(tab terminal also can be used)
- ◎ Rainproof cap, water-proof and oil-proof, it is suitable for full series products
- ◎ Mounting hole: $\phi 12\text{mm}$



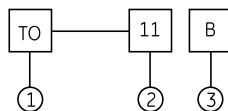
额定值 Ratings

负载 Load	型式 Type	AC负载 Rating	DC负载 Rating
电阻性负载 Resistance Load	TO	10A 250V 15A 125V	0.4A 250V 0.8A 125V
	T5	15A 250V 20A 125V	0.5A 250V 0.9A 125V
电感性负载 Inductive Load	TO	10A 250V 15A 250V	0.2A 250V 0.4A 125V
	T5	15A 250V 20A 125V	0.3A 250V 0.5A 125V 15A
灯泡负载 Lamp Load	TO	300W 100V 500W 200V	30V
	T5	400W 125V 800W 250V	-
马达负载 Motor Load	TO	200W 125V 300W 250V	7A 30V
	T5	400W 125V (single phase)	-
	TO	550W 250V (three phase)	-
	T5	750W 250V (three phase)	-

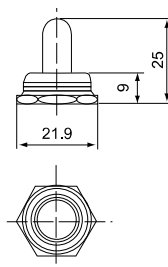
特性 Characteristics

接触电阻 Contact resistance	15M Ω 以下(初期值) max. (initial)
绝缘电阻 Insulation resistance	100M Ω 以上(above)(在500VDC下) Under 500VDC
电介强度 Dielectric strength	2000VAC, 50/60Hz持续1分钟 For 1minute
振动 Vibration	10至55Hz, 1.5mm双振幅 Double amplitude
周围温度 Ambient temperature	-10 $^{\circ}\text{C}$ ~+80 $^{\circ}\text{C}$ (没有结冰) (With no icing)
湿度 Humidity	85%以下 85% RH max

型号说明 Model Designations



TOW 防水套 Rainproof cap (Tow)



铭牌 Nameplate



TO-P1



TO-P2



TO-P3

项目 Items	代号 Code	说明 Description
型式 Type	TO	10A 250VAC
	TOR	10A 250VAC 自动复位 Spring return
	T5	15A 250VAC
	T5R	15A 250VAC 自动复位 Spring return
接点 Contact	11	单极单投 Single pole single throw ON-OFF
	12	单极双投 Single pole double throw ON-ON
	13	单极双投(中间OFF) Single pole double throw (central OFF)ON-OFF-ON
	131	单极双投(中间OFF单边复位) Single pole double throw (central OFF single return)ON-OFF-ON
	21	双极单投 Double pole single throw ON-OFF
	22	双极双投 Double pole double throw ON-ON
	23	双极双投(中间OFF) Double pole double throw (central OFF)ON-OFF-ON
端子 Terminal	231	双极双投(中间OFF单边复位) Double pole double throw (central OFF single return)ON-OFF-ON
	A	快速端子(#250) Tab terminal
	B	螺丝端子 Screw terminal
	C	焊接端子(#187) Solder terminal

外观和尺寸 Appearance and Dimension

